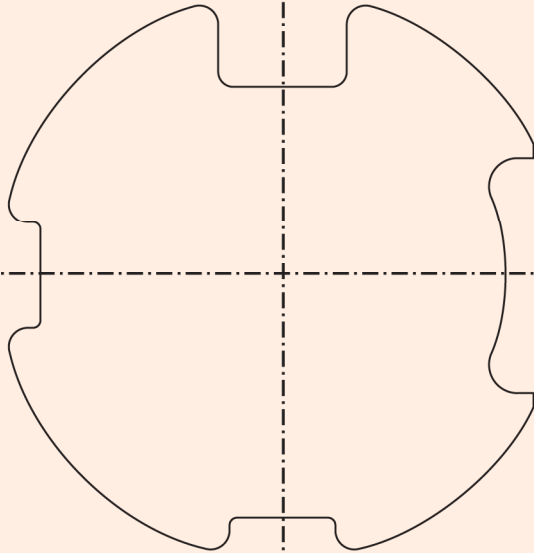
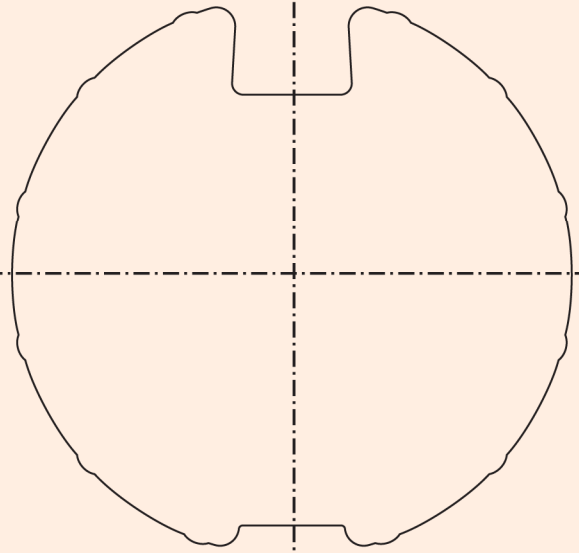


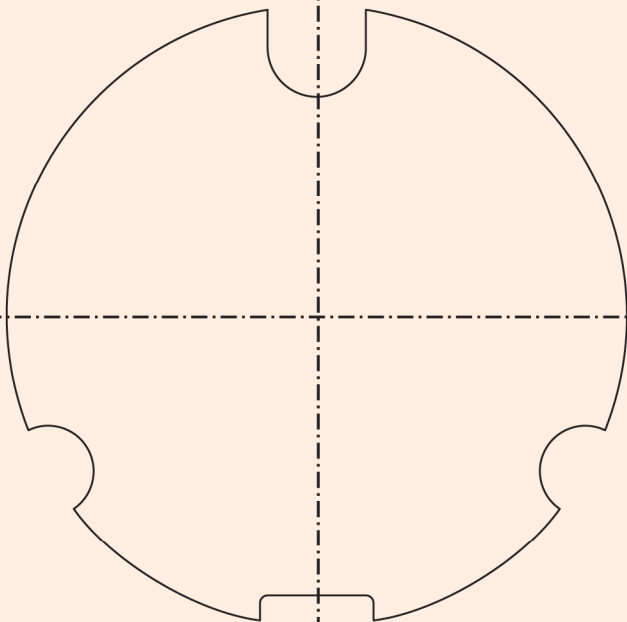
23 383.0101
für Nutrohr \varnothing 78 x 1 Flachnut; MHZ



23 070.0001
für Nutrohr \varnothing 78 x 1,25 Rundnut, Röchling
 \varnothing 78 x 1 Rundnut Döner



23 378.0001
für Nutrohr \varnothing 85 x 1



23 061.0001
für Nutrohr \varnothing 90
Le-Profil; \varnothing 89 Deprat

